



**SPECIFICATION SHEET**  
**MODULAR**  
**DECORATIVE LEG ATTACHMENT**  
**DMSP1**



**DECORATIVE LEG FEATURES**

- Designed & Made in Canada
- Premium Select Canadian Maple & Birch Solid Wood and Plywood

**DM BATH 2-YEAR LIMITED WARRANTY**

For warranty details visit [www.dmbath.com](http://www.dmbath.com)

**WOOD FINISH OPTIONS**

For full colour options visit [www.dmbath.com](http://www.dmbath.com)

**RELATED PRODUCTS** Sold Separately

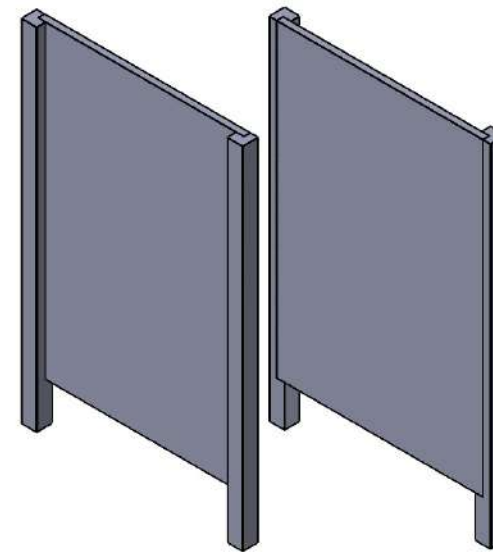
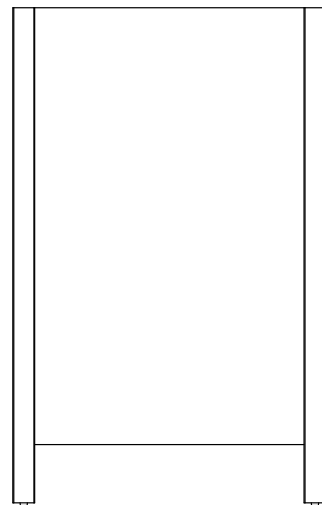
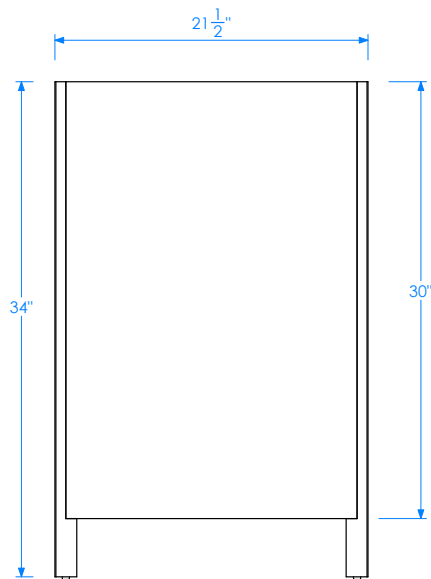
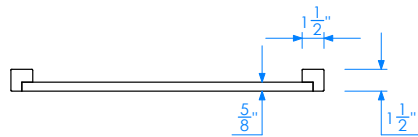
- |          |                                     |
|----------|-------------------------------------|
| DMSC1801 | 18" Freestanding Cabinet Attachment |
| DMMT24   | 24" Modular Make-Up Attachment      |
| DMMT30   | 30" Modular Make-Up Attachment      |

**SPECIFICATION VARIANCE**

Our products are constructed to maintain close dimensional tolerances that may vary slightly during the manufacturing of materials; normally +/- 1/8", occasionally more. In most cases, this slight variation does not affect installation, appearance or function. We recommend that you measure the actual cabinet before you frame, design or finish the space for your vanity. We can not be held responsible by the end user if this guideline is not followed. We reserve the right to make revisions without prior notice to product specifications.



**SPECIFICATION SHEET**  
MODULAR  
DECORATIVE LEG ATTACHMENT  
DMSP1



**DM BATH ADD ON LEG PANEL**  
34" TALL  
21-1/2" WIDE

**IMPORTANT NOTE** Please install product according to installation instructions.